

Hugs 2024 Challenge

Due February 2024

When you turn in your kit, please return the pattern, extra fabric, etc.
Thank You – we reuse everything! Lori & Debi



Briar Rose
by
England Street
Quilts



Briar Rose

Fabric Requirements

1 Jelly Roll
2 yards background fabric
(for contrast)
1 yard Border Fabric
½ yard Binding

Tip: Choose a jelly roll with fewer light fabrics.
You need 32, 2½" strips of medium to dark color value for this quilt

Finished Size 56" x 72"

This pattern is based on a Moda Jelly Roll, which consists of 40, 44" strips of fabric.

All seams are ¼".

Please read the instructions carefully before commencing the project.

This pattern was written by Shontelle Stanyer of England Street Quilts (englandstreet.blogspot.com.au) and was inspired by the You Tube video by Missouri Star Quilt Company (<http://youtu.be/ex2wmgSKJI4>)

I've have modified this pattern with some additional instructions. (Lori)

There are TWO challenges with this pattern:

- The first is the quilt top as shown in the pattern
- The second is using the *waste* half square triangles (HST) in the border(s) or ?? It's completely up to you.
- I used mine in the second inside border. I can't wait to see what you do!

I've included the following handouts with this pattern:

- Making half square triangles (HST's), just remember to follow the pattern on your line placement.
- Trimming Oversized Triangle Squares (one technique).
- Accurate seam allowance. Always good to review!

When I made my quilt my 16 patch squares, they weren't quite square. I discovered that not all pre-cut Jelly Rolls are the same! 🙄 So, watch your strips, my squares ended up being 8-1/4, I had to adjust the steps after that. I believe all the squares should be 8-1/2 unfinished.

Cutting Instructions

From the Jelly Roll:

Step 1: Choose **32 strips** from your jelly roll. It is best if you choose the **darkest fabrics** as very light fabrics will not contrast with your background fabric.

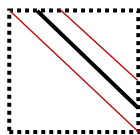
Step 2: Carefully cut the selvage off both ends of each jelly roll strip. Only cut off what is necessary of the selvages.

Step 3: From each of your 32 jelly roll strips cut (1) 24" section and (1) 18" section, Put the 24" strips aside for the time being.

Step 4: Choose 27 of your (32) 18" strips (this is for the 2-1/2" squares, you get 7 squares per cut with a little bit left over.) (Put the others aside, you will not need them for this project – return them with your kit when you turn it in).

Cross cut these 27 strips into (184) 2 1/2" squares. Mark the **WRONG** side of each of these squares with **TWO** diagonal lines (**shown in red**) (measure 1/4" from the center diagonal line to get the correct placement of your **black line**) as shown in Diagram 1.

Step 4 (continued): You will be sewing a 1/4" on each side of the **black line**, part of the challenge will be to use the 'waste triangles'. You will be cutting on the **black line**.



The red line is the sewing line.

The black line is your drawing line & cutting line.

Diagram 1.

I will include an additional handout with further instructions for making Half Square Triangles (HST).

From the background fabric:

Step 1: Cut (12) 4 1/2" width of fabric strips

Step 2: Cross-cut the 4 1/2" strips into (120) 4 1/2" squares. Each strip should yield (10) 4 1/2" squares.

From the border fabric:

I always wait until the top is done before I cut the border fabric.

More information is provided toward the end of the pattern.

Making the 16-patch blocks

Step 1: Organize your (32) 24" long strips into 8 groups of four. Remember this is Scrappy!

Step 2: Take each group of four and sew the strips together down the long edge. Set the seam and press to **ONE SIDE** (all vertical seams should be facing the same direction) as you add each new strip – this will ensure that your seams stay straight and do not bow. Continue until you have 8 jelly roll units as pictured below in Diagram 2.

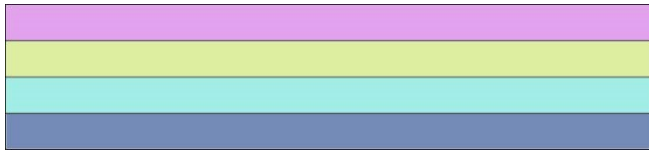
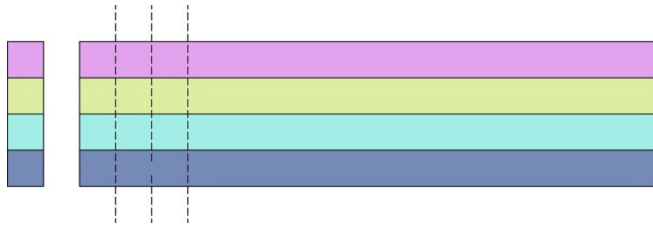


Diagram 2

Step 3: Cross cut the four joined jelly roll strips into $2\frac{1}{2}$ " units as pictured below in Diagram 3. You need a total of **72 units**.



Diag. 3

Step 4: Follow diagram 4 to make a total of (18) 16 patch blocks as illustrated in diagram 5. Set and press the seams as you add each new 4-patch unit to keep the seams straight. (Note the black arrows – all seams facing the same way.)

Note: When I put these together, I would sew them with one section seams up, and then seam down etc, the seams nested very nicely. (Note the alignment of the **BLUE** arrows.)

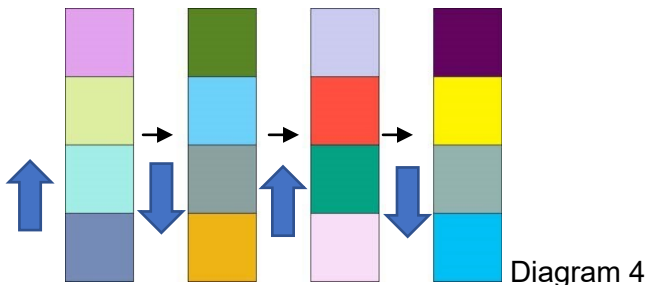


Diagram 4

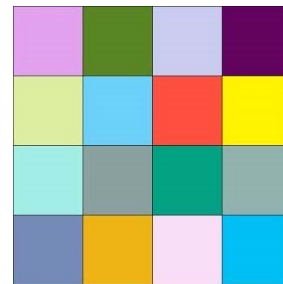
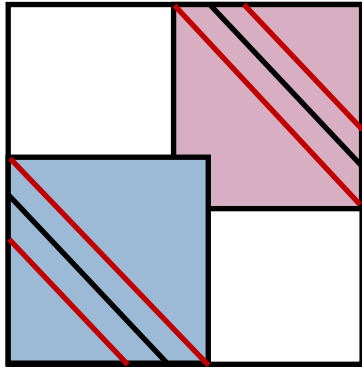


Diagram 5

Making the 'X' blocks

Step 1: Using the 2½" squares and the 4½" background squares you cut earlier, place 2, 2½" squares on opposing corners of a 4½" square as shown in diagram 6. Sew along the **RED** lines.

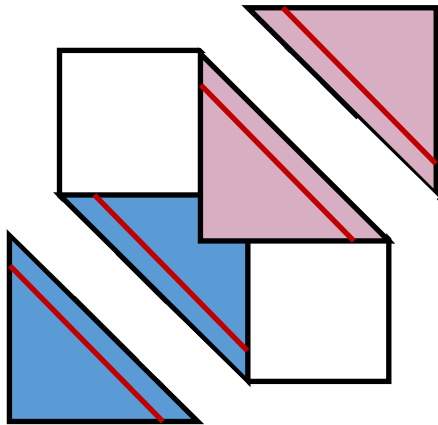


The red line is the sewing line.

The black line is your drawing line & cutting line.

Diagram 6

Step 2: Trim the corners off by cutting on the **BLACK** line, you will have a ¼" seam on your square and the waste triangle as shown in diagram 7.



The red line is the sewing line.

Diagram 7

Step 3: Before setting seams, I laid out the four units that I liked, then I would set the seams, see Step 4. **Make 68.**



Diagram 8

Step 4: Keeping the colors random to enhance the scrappy effect of the quilt, join these units together as shown in Diagram 9 below. **Press so that seams interlock.** When I pressed the seams, I would press the blocks that are diagonal from each other in the same way. By doing this, your seams interlock very nicely. It's worth the extra time to do this!

When joining the half X blocks to make the complete block, I pressed the seams open to reduce bulk.

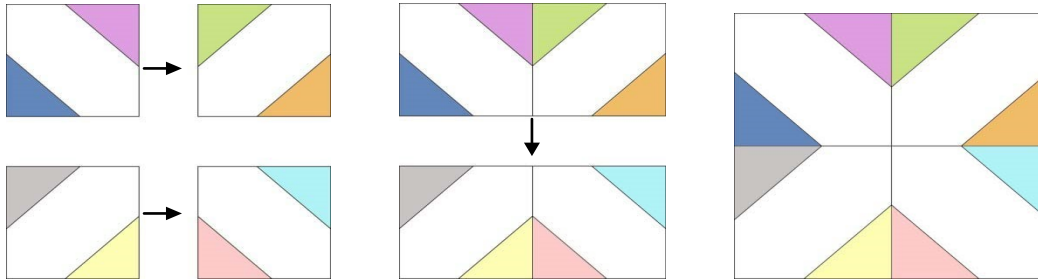


Diagram 9

Make 17 X blocks.

Making the half 'X' blocks for border 1

Border 1 of the quilt is made up of a complete row of half X blocks.

Step 1: Place 1, 2½" square in the corner of a 4½" square, right sides together, as shown in diagram 10. Sew along the **RED** diagonal lines you drew earlier.

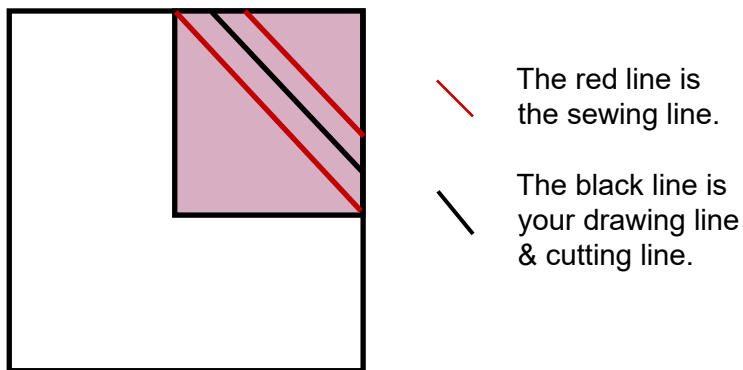


Diagram 10

Step 2: Trimming on the the black line will give you a ¼" seam allowance on both sides.

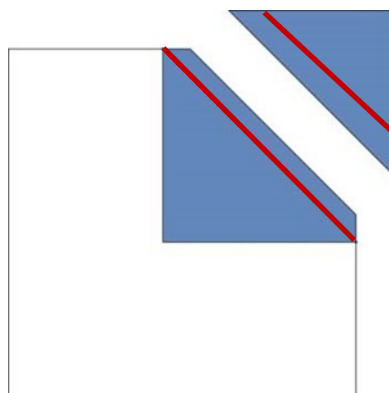


Diagram 11

Step 3: Layout out the two squares to your liking. If you Set the seams opposite to each other they will interlock nicely.

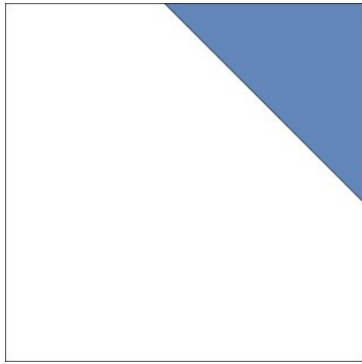
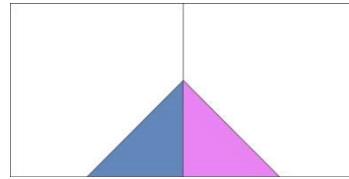
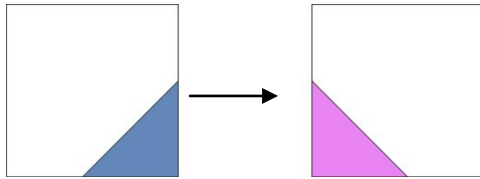


Diagram 12

Make 48 of these.

Step 4: Again, keep the colors random and join the blocks as shown in diagram 13 to make the completer blocks. Press seams to one side.



Diag. 13

Make 24 of these.

At this stage you should have 4, 4½" background squares left – these are for the corners of your completer border. See the quilt layout diagram on page 7 for clarification. (Or you can do something else!)

Assembling the Quilt Top

Follow the quilt layout diagram on page 9 to assemble the quilt top.

Border 2:

Step 1: Join 3, 5" strips together at the ends. Fold in half lengthways and cut two equal lengths. These are for the top and bottom borders. Be sure to measure the quilt to get the exact measurement before putting the borders on.

Step 2: Join 2, 5" strips together at the ends. Repeat with the remaining two strips. These are for the side borders. Be sure to measure the quilt to get the exact measurement before putting the borders on.

Step 3: Once the main body of the quilt has been pieced, lay it flat and measure the width of the quilt across the center. Cut two strips this length from the strips you pieced in step 1. Attach these to the top and bottom of the quilt. Press towards the border.

Step 4: Again, lay the quilt flat and measure the length of the quilt across the center. Cut two strips to this measurement from the strips you pieced in step 2. Attach these to the two sides of the quilt and press towards the border.

Well done! All finished!

Quilt Layout

Lay out the blocks in rows, as shown on the next page.

Using a $\frac{1}{4}$ " seam, sew the blocks into rows and press. Alternate your pressing direction for interlocking seams. Next, sew the rows together, press and then add the solid border.

