

## Placing Instructions:

### Quilt Center:

Assemble Quilt Center following Quilt Layouts below.

Pay close attention to orientation of each block.

Use Fabric A in Chain Block Rows.

### Inner Border:

Attach side inner borders using Fabric J.

Attach top and bottom inner borders using Fabric K.

### Outer Border:

Attach side outer borders using Fabric L.

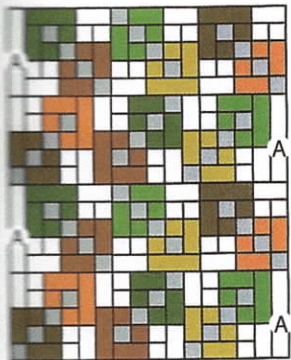
Attach top and bottom outer borders using Fabric M.

### Finishing:

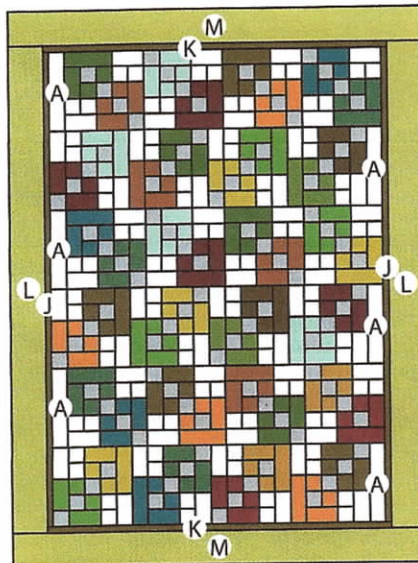
Piece Fabric N strips end to end for binding.

Quilt and bind as desired.

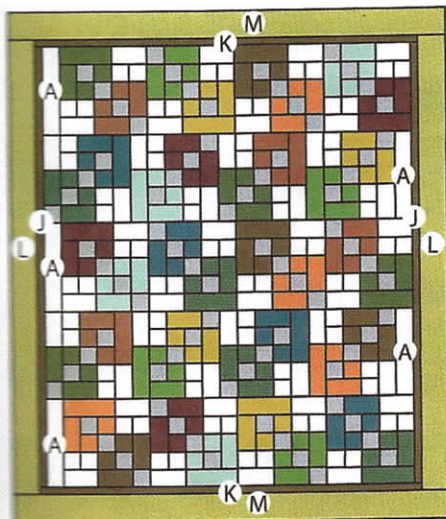
## Quilt Layouts:



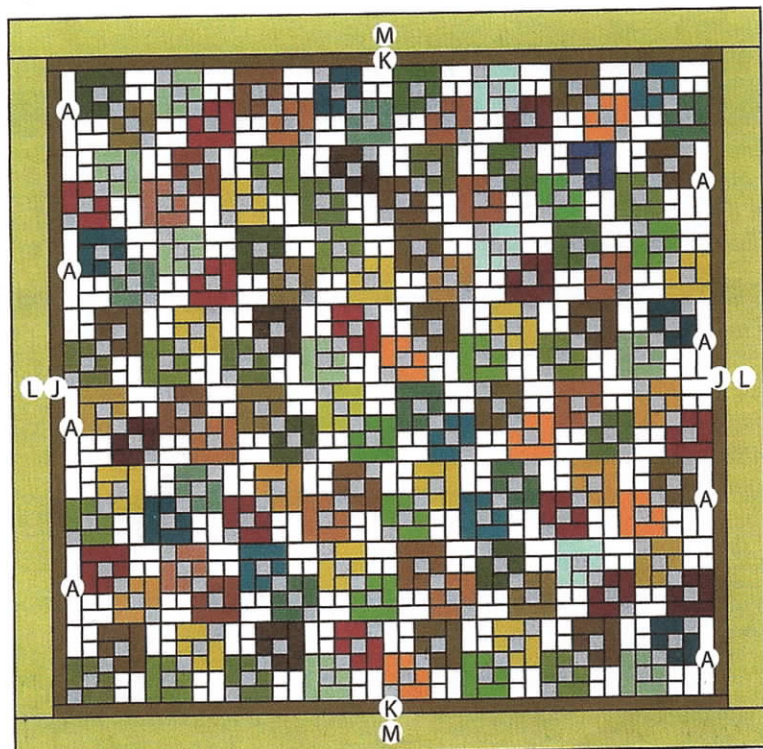
Crib - 40 1/2" x 50 1/2"



Twin - 66" x 88 1/2"



Lap - 63" x 73"



King - 118 1/2" x 116"