

Covington Quilter's Guild

Meeting Minutes from January 8, 2015

Kathy Scott (President) opened the meeting at 7:00 and turned the mic over to **Linda Ferguson (Vice President)** to introduce the speaker, Ted Hoffman of Clothworks which is a Seattle-based company.

Ted Hoffman gave us an overview and history of the American Made brand of cotton fabrics which are completely grown/milled/processed in the United States. Ted came prepared--he had 11 door prizes to give away. Congratulations to each of the winners of his prizes! (Karin Powell, Kathy Roberts, Jan Walker, Kim Mitchell, Ada Kirmser, Jana Colombi, Theresa Wright, Kimberly Wood, Loretta Edinger, Cyndy Knighton, and Nicole Sedgwick).

Membership (Leanne Shipley):

- Thank you to all members who have renewed their dues so promptly!
- Welcome to our Guests tonight: Teresa Shover, Barbara Lewis, Janice Fair, and Jessie Kotarsky (Jessie will be mailing in her dues to become a member!)
- We also want to welcome our new members (and returning) members: Christine Koenen, Lisa Marchell, Carolyn Carnahan, Debi Mashak, and Janie Sevela.
- This month's Badge Prize went to Julie Dominguez. Keep wearing those badges! :)

At 8:00, we went to break and **Kathy Scott** brought everyone back together at 8:15. Carol Thiemens made a motion to approve the December minutes. The motion was seconded by Dawn Shirron. The motion to approve the December minutes was approved by the membership.

Treasurer's Report (Theresa Bowes and Lori George, past Treasurer):

- Beginning BECU balance was \$5,215.05 on 11/29/14.
- Ending BECU balance was \$4,915.95 on 12/26/14.
- Capital One 360 balance was \$6,461.85 on 12/31/14.
- Theresa invited members to ask questions about the accounts/reports because a value is placed on transparency.
- Lori provided members with actuals from the Quilt Show, showed us that nearly every line item came in under budget.
 - Spent \$120 on ice for the quilt show for 4 days (set up day + 3 days of show)
 - Need to purchase plastic utensils, napkins, water/soda, paper plates, etc. also. Water/soda is mainly provided by members, but extra is purchased to make sure there will be enough.
- Please ask either Lori or Nicole Sedgwick about any Quilt Show budget questions from last year's show.

2015 Quilt Show (Nicole Sedgwick):

- Nicole presented a budget for the 2015 Quilt Show. She needed to ask the Board for this money and asked for \$4,000 not realizing that last year's budget began with \$4,500. She was able to make the money work into a realistic budget for the show.
 - School rental fee did increase, but there is NO INCREASE in the cost to us for using both gyms.
 - Nicole addressed the need to purchase a laser printer, sharing that the cost would be recovered after having it for only one year. This cost would be part of the Guild's 'Capital Expenditures' budget, not part of the Quilt Show Budget.

2015 Guild Budget (Lori George):

- Total Budget did increase.
- Hugs batting is the largest expense we have for Hugs program. Nothing is wasted in the Hugs quilts...all extras/scrap are used.
- Storage unit
 - We get one month free because we prepay for the year.
 - Absolutely worth the expense
 - no rodents
 - it's clean
 - ambient temperature controls in the floor which protects our stuff
 - stores our standards, auction/bazaar items, hugs, etc.

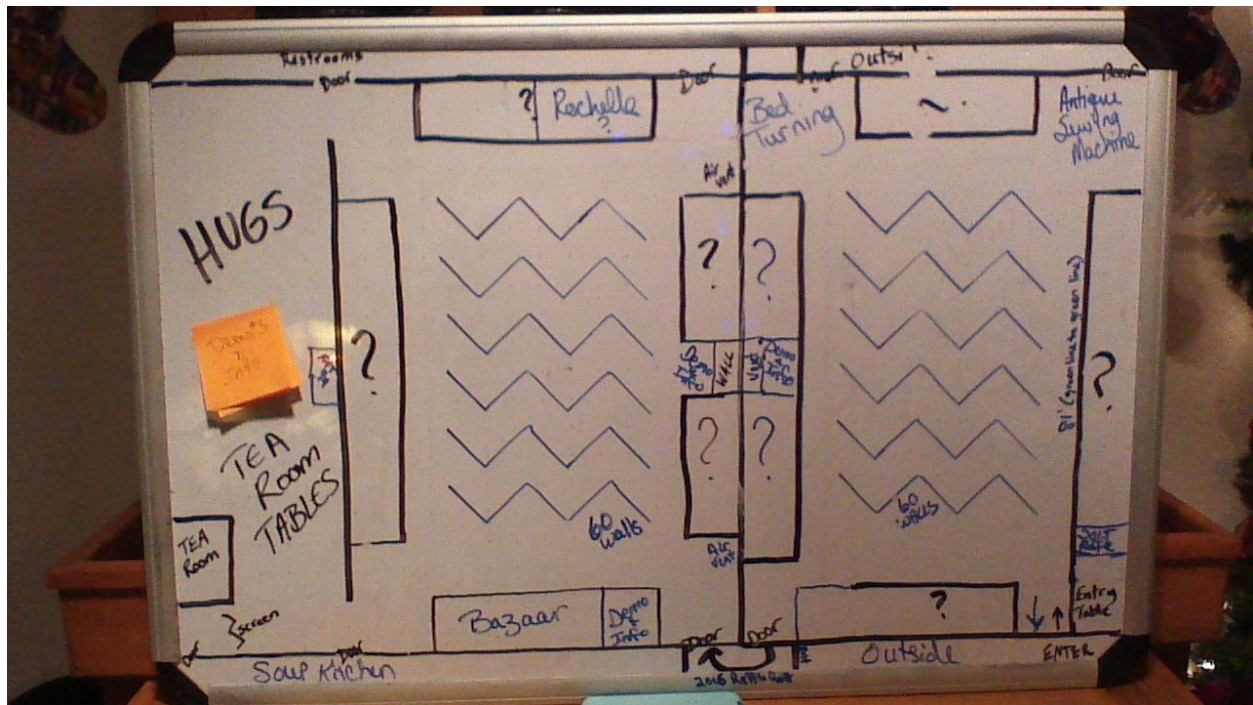
A motion was made to approve the 2015 Guild budget as presented to the Guild (included within that is the Quilt Show budget for expenses) by Theresa Wright and seconded by JoAnn Lee. The budget for 2015 was unanimously approved by the membership.

Printer discussion (Nicole Sedgwick):

- In the budget, capital expenditure line item is \$1,600.00. Nicole is researching a color laser printer which would pay for itself in one year (by printing our own save-the-date cards, raffle tickets, agendas, etc). Quilt show posters and guild directories will still be sent to a professional printer.
- Nicole will house the printer once it is purchased because she will be the one using it the most.
- Cost of the cartridges are included in the expense and it is anticipated that only one will be needed each year.
- Printer cost range is \$300-\$500, cartridges are \$200-\$250 each.
- Most models are 3-in-1 (copier/scanner/printer), but scanner is not a priority.
- Nicole is looking for a model which will handle high volumes of cardstock, print in high quality color, and will do double-sided printing.
- A member recommended (Karin Powell, I think) that we not invest in an all-in-one because they break down more quickly and quality is sacrificed for each purpose.
- Another member recommended that Consumer Reports be consulted for ratings of various models.

Quilt Show Committee (Chair is Nicole Sedgwick):

- See the photo below of the proposed layout of the show.
- Entrance will be close to the parking lot now, rather than having to walk around the back of the building
- 2016 Raffle Quilt will go at the entrance
- Bed Turning will have an enclosed (with standards) space.
- Demo/information tables will be scattered throughout and will fill in some of the “awkward” spaces
- Carol Cowan is looking for people willing to do demos
- Quilts will be displayed in a zig zag fashion, like the Enumclaw show
- We are increasing “wall” space from 84 walls to 120 walls. Lots of room for quilts!!
- We average about 150 quilts in the show each year. Now more room to display.
- Location of Bazaar--see diagram.
- Hugs space will be in the place we are accustomed, but now will be one huge Hugs workshop taking place during the show (dedicated ironing stations, binding stations, quilting stations, etc.)
- Fat quarter basket raffle moved to by the Tea Room
 - Concern raised about that change
 - All committee chairs were reminded to please attend the meetings so these things can be discussed more fully
- Carol Cowan is asking a woman she knows about doing some seminars on antique quilts opposite bed turnings.
- Vendors will fill in all the spaces.
- Fat quarter baskets made more money last year than ever before. This was a change in the size and number of baskets offered--smaller size but many more baskets to raffle vs. larger size and fewer baskets.
 - Please bring in fat quarters for these baskets. Give them to Mary Ann Baker or Brenda Blessing.
 - Members can also donate baskets and other cute containers.
 - Members can also sponsor their own basket of fat quarters to donate to this event.
- Members have been asking for this and NOW you get it! This year we will have pre-paid quilt show tickets that members can purchase (for \$5) and give to whoever they would like. See Kathy Scott to buy these tickets.
- Quilt Show Challenge Quilt
 - 1920s Patterns were selected from a collection Mary Willis brought to the meeting. Selection was narrowed down to 10, representing a variety of skill levels and techniques.
 - American Jane makes some of these patterns and have agreed to sell their patterns to us for half price (\$5.00) for use in our Quilt Show challenge.
 - Bailey Wilkens has the rules for the challenge and has the patterns.
 - Nicole will place an order after this meeting and will do more orders to accommodate members not in attendance or needing time to decide which pattern to do.



501(c)(3) status (Kathy Scott, President):

- Currently, we are only a 501(c), but are considering the 501(c)(3) status for the charitable donations
- We are eligible to pursue this designation because of the high proportion of our non-profit budget that goes to Hugs (charitable contributions) and to Education (speakers, workshops, promoting our craft).
- As a 501(c)(3), when donations are made to the Guild, donor can deduct that on his/her tax return.
- As a 501(c)(3), we would save money at some quilt retreat sites due to this status.
- There is an application fee of \$400, and we can use EZ version of the application which we qualify for.
- Annual 501(c)(3) fee is less than \$100.
- Having a 501(c)(3) status will create a bigger job for our Treasurer (Theresa Bowes).
 - Receipts required to be given for every donation
 - Annual year-end reports will need to be generated also
 - Maintaining a 501(c)(3) status requires we continue to do the Charity work and the education of members, we will add the receipt piece and year-end reporting, and we must not become involved in political agendas.
 - Donations to the Guild are expected to increase.
 - If the job becomes bigger than Theresa can manage alone, we can find help for her in this role.
 - Question was raised about the legal limits on how our money (budget) is used.
 - Board members cannot pre-determine their gift or value of the gift
 - Membership can still give the board gifts to thank them for their service.

A motion to apply for 501(c)(3) status was made by Jill Ellis and seconded by Carolyn Carnahan. Motion passed unanimously.

Block of the Month (Mary Ann Baker):

- Winner of the drawing for December/January blocks (Christmas present block) is Lori George! There were 16 blocks turned in.
- February block of the month is a Double Hour Glass. Pattern will be on the website if you did not get to pick up a pattern at the meeting.

Tips and Tricks (Peggy Strain):

- use reusable, repositionable colored scotch tape to mark the seams on the sewing machine bed. It can be moved without any adhesive residue.
- to keep your bobbins from getting all wild and tangled, buy some clear rubber tubing from the hardware store and cut it to the width of your bobbin and down through the center so it slips right over.

Auction (Carol Thiemens for Mary Willis):

- Please start to bring in items for the Auction (March meeting).

2015 Raffle Ticket Sales (Linda Ferguson):

- Tickets are available to check out to members to sell, tickets are available to members to buy. See Linda. Please return ticket sales money as soon as you are able to.

Workshops - Rolled Pillow Case Class (Linda Ferguson):

- Sandra Fountain has agreed to teach a class on how to make rolled pillow cases.
- Stay tuned for details!

Retreats (Theresa Wright):

- There has been so much interest, we have expanded to 4 retreats, 2 in April and 2 in October.
- Please limit your sign ups to two retreats so that other members also have an opportunity to participate.

New Member Orientation (Lori George):

- January 14 at Lori's house (address is in the directory)
- Please email or call her to confirm your interest and intention to attend (see directory).

Hugs Workshops (Lori George):

- Saturday, January 31 at Lori's house
- Saturday, February 28 at Lori's house
- Please reserve your spot so Lori knows how many people to expect and can make room for all who are interested!
- Hugs Orphan Block challenge ends next month. Bring your finished (bound and everything) orphan block quilts to the February meeting!

- Please remember to return the plastic bag, blue cardstock tag, any extra fabric or scraps, pins, etc. when you turn in your Hugs quilts. NOTHING goes to waste!!

Refreshment Committee (Shirley Farnsworth):

- Sign up sheet will be located at the membership table.
- Please consider signing up to bring refreshments for one of the months (months that are not pot luck months we need 6 people to sign up to bring refreshments).

Past Presentation blocks (JoAnn Lee):

- Please return JoAnn's presentation blocks to her next month, or put in the mail. They have been delayed by the holidays in getting back to her.

Current Presentation block (Lori George):

- All fabric is included.
- Please return no later than the March meeting.

Taylor Creek news (JoAnn Lee):

- Fliers are around that show classes being offered at the shop.
- Moda has a challenge going on right now which will support military families. See JoAnn for details.
- the local Lutheran church often recruits us to help with service projects. They are collecting new and gently used knitting and sewing tools to be donated in areas that will benefit from them.

Quilt Show Ribbons Chair (Bailey Wilkens):

- Please bring in any scraps of 20s fabrics for construction of the quilt show's ribbons.
- She wants anything you can spare that is ½ inch or larger.

Save the Dates (Kathy Scott):

- January 27, Executive Board meeting
- February 5, next Guild meeting
- February 10, Quilt Show Committee meeting